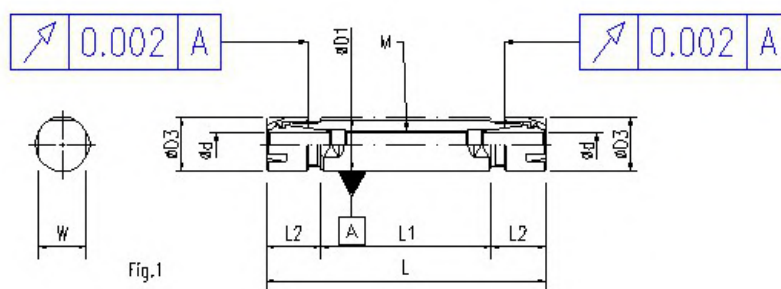


雙頭短鼻側固直柄 mini 細型 ERM 筒夾刀柄

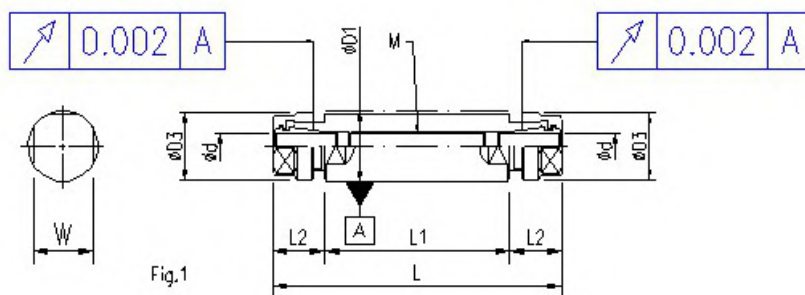
Double heads short nose type straight shank with flat mini slim ERM collet chucks



規格 Part No.	Fig.	夾持範圍 Ø Range	L	L1	L2	is	ØD1	ØD2	ØD3	M	W	螺帽 Nut	彈性筒夾 Collets	扳手 Wrench
SSLD16-ER11M-030	1	0.5~7.0	62	30	16		16		16	M8*P1.0	14	ER11M	ER11	W-ER11M
-050			82	50										
-075			107	75										
SSLD20-ER11M-033	1	0.5~7.0	65	33	16		20		16	M8*P1.0	17	ER11M	ER11	W-ER11M
-053			85	53										
-085			117	85										
-ER16M-055		0.5~10.0	101	55	23		20		22	M11*P1.0	17	ER16M	ER16	W-ER16M
SSLD22-ER16M-067	1	0.5~10.0	113	67	23		22		22		19	ER16M	ER16	W-ER16M
-080			133	80										
-065		0.5~10.0	111	65	23		22		22	M11*P1.0	19	ER16M	ER16	W-ER16M
-085	131		85											
SSLD23-ER16M-040	1	0.5~10.0	92	40	26		23		22		16	ER16M	ER16	W-ER16M
-060			112	60										
SSLD25-ER16M-062	1	0.5~10.0	108	62	23		25		22	M11*P1.0	22	ER16M	ER16	W-ER16M
-080			126	80										
-ER20M-062		0.5~13.0	108	62	24		25		28	M14*P1.0	22	ER20M	ER16	W-ER16M
-080	126		80											
SSLD32-ER20M-055	1	0.5~13.0	103	55	24		32		28	M14*P1.0	27	ER20M	ER20	W-ER20M
-085			133	85										
SSLD5/8"-ER11M-030	1	0.5~7.0	62	30	16		5/8"		16	M8*P1.0	14	ER11M	ER11	W-ER11M
-050			82	50										
SSLD3/4"-ER11M-033	1	0.5~7.0	65	33	16		3/4"		16	M8*P1.0	17	ER11M	ER11	W-ER11M
-053			85	53										
-085			117	85										
-ER16M-055		0.5~10.0	101	55	23		3/4"		22	M11*P1.0	17	ER16M	ER16	W-ER16M
SSLD1"-ER16M-045	1	0.5~10.0	91	45	23		1"		22	M11*P1.0	19	ER16M	ER16	W-ER16M
-062			108	62										
-080			126	80										
-ER20M-062	0.5~13.0	108	62	24		1"		28	M14*P1.0	22	ER20M	ER20	W-ER20M	
-080		126	80											
SSLD1 1/4"-ER20M-055	1	0.5~13.0	103	55	24		1 1/4"		28	M14*P1.0	27	ER20M	ER20	W-ER20M
-085			133	85										

雙頭短鼻側固直柄 ER 筒夾刀柄

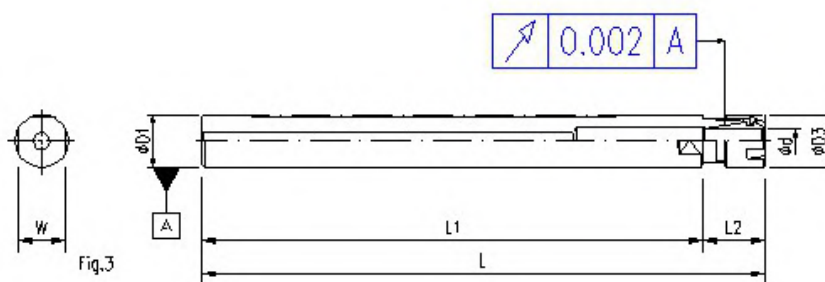
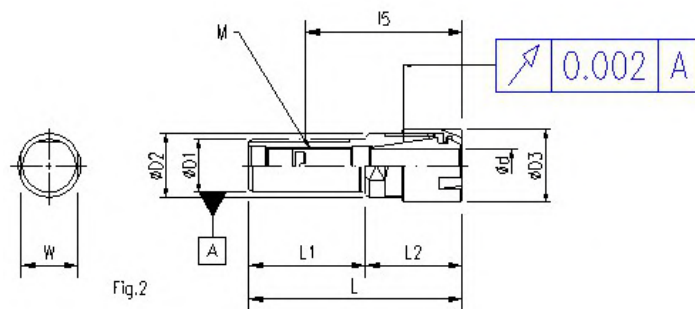
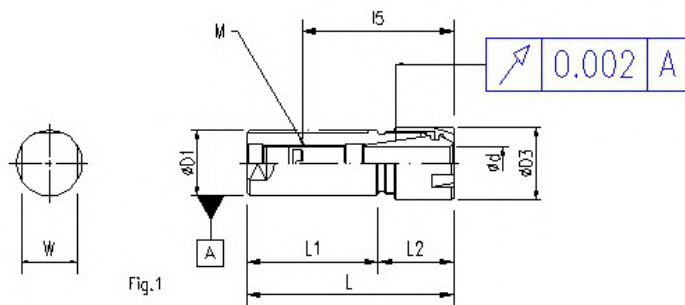
Double heads short nose type straight shank with flat ER collet chucks



規格 Part No.	Fig.	夾持範圍 Ø Range	L	L1	L2	is	ØD1	ØD2	ØD3	M	W	螺帽 Nut	彈性筒夾 Collets	扳手 Wrench
SSLD20-ER11-033	1	0.5~7.0	63	33	15	—	20	—	19	M8*P1.0	17	ER11SH	ER11	W-ER11
-053			83	53										
-082			118	82										
SSLD25-ER11-052	1	0.5~7.0	82	52	15	—	25	—	19	M8*P1.0	22	ER11SH	ER11	W-ER11
-082			112	82										
-ER16-062		0.5~10.0	106	62	22	—	25	—	28	M11*P1.0	22	ER16SH	ER16	W-ER16
-080			124	80										
-ER20-062		0.5~7.0	110	62	24	—	25	—	34	M14*P1.0	22	ER20SH	ER20	W-ER20
-080			128	80										
SSLD3/4"-ER11-033	1	0.5~7.0	62	33	15	—	3/4"	—	19	M8*P1.0	17	ER11SH	ER11	W-ER11
-053			83	53										
SSLD1"-ER11-052	1	0.5~7.0	82	52	15	—	1"	—	19	M8*P1.0	22	ER11SH	ER11	W-ER11
-082			112	82										
-ER16-062		0.5~10.0	106	62	22	—	1"	—	28	M11*P1.0	22	ER16SH	ER16	W-ER16
-080			124	80										
-ER20-062		0.5~13.0	108	62	24	—	1"	—	34	M14*P1.0	22	ER20SH	ER20	W-ER20
-080			126	80										

短鼻型側固直柄 mini 細型 ERM 筒夾刀柄

Short nose type straight shank with flat mini slim ERM collet chucks



規格 Part No.	Fig.	夾持範圍 Ø Range	L	L1	L2	l5	ØD1	ØD2	ØD3	M	W	螺帽 Nut	彈性筒夾 Collets	扳手 Wrench
SSL16-ER11M-035	1	0.5~7.0	51	35	16	37	16		16	M8*P1.0	14	ER11M	ER11	W-ER11M
-070	86		70	57										
-151	170		151	19										
-ER16M-035	2	0.5~10.0	64	35	29	47	16	19	22	M11*P1.0	17	ER16M	ER16	W-ER16M
-070			99	70		72								
-ER20M-035		0.5~13.0	75	35	40	47	16	24	28	M11*P1.0	22	ER20M	ER20	W-ER20M

SSL20-ER11M-040	1	0.5~7.0	56	40	16	37	20		16	M8*P1.0	17	ER11M	ER11	W-ER11M
-070			86	70		57								
-105			121	105		67								
-ER16M-040	1	0.5~10.0	63	40	23	47	20		22	M11*P1.0	17	ER16M	ER16	W-ER16M
-070			93	70		72								
-105			128	105		82								
-137			163	137		26								
-ER20M-040	2	0.5~13.0	70	40	30	47	20	24	28	M14*P1.0	22	ER20M	ER20	W-ER20M
-070			100	70		72								
-105			135	105		82								

SSL22-ER16M-040	1	0.5~10.0	63	40	23	32	22		22	M11*P1.0	19	ER16M	ER16	W-ER16M
-080			103	80		72								
-105			128	105		82								
-ER16M-040	1	0.5~10.0	102	71	31		22		22		19	ER16M	ER16	W-ER16M
-071			129	98										
-ER20M-080	2	0.5~13.0	110	80	30	72	22	24	28	M14*P1.0	22	ER20M	ER20	W-ER20M
-105			135	105		82								

SSL23-ER16M-075	1	0.5~10.0	100	75	25		23		22		19	ER16M	ER16	W-ER16M
-----------------	---	----------	-----	----	----	--	----	--	----	--	----	-------	------	---------

SSL25-ER11M-070	1	0.5~7.0	86	70	16	57	25		22	M8*P1.0	22	ER11M	ER11	W-ER11M
-ER16M-050		0.5~10.0	73	50	23	57	25		22	M11*P1.0	22	ER16M	ER16	W-ER16M
-070			93	70		72								
-105			128	105		82								
-ER20M-050		0.5~13.0	74	50	24	57	25		28	M14*P1.0	22	ER20M	ER20	W-ER20M
-070			94	70		72								
-105			129	105		82								
-137.5			166	138		28								
-ER25M-070	2	0.5~16.0	103	70	33	72	25	30	35	M18*P1.5	27	ER25M	ER25	W-ER25M

SSL32-ER20M-070	1	0.5~13.0	94	70	24	72	32		28	M14*P1.0	27	ER20M	ER20	W-ER20M
-095			119	95		82								
-ER25M-080			0.5~16.0	105	80	25	82	32		35	M18*P1.5	27	ER25M	ER25

SSL5/8"-ER11M-035	1	0.5~7.0	51	35	16	37	5/8"		16	M8*P1.0	14	ER11M	ER11	W-ER11M
-070			86	70		57								
-ER16M-035	2	0.5~10.0	64	35	29	42	5/8"	19	22	M11*P1.0	17	ER16M	ER16	W-ER16M
-070			99	70		72								
-ER20M-035			0.5~13.0	75	35	40	42	5/8"	24	28	M11*P1.0	22	ER20M	ER20

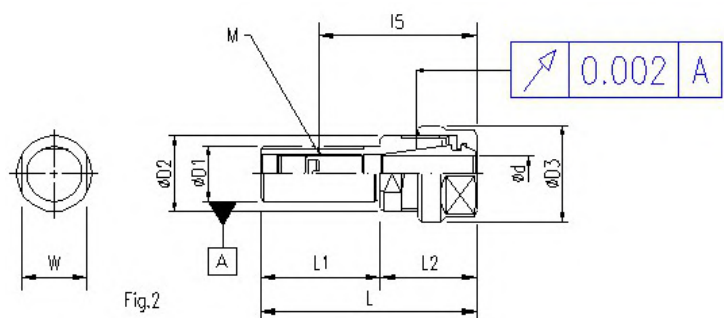
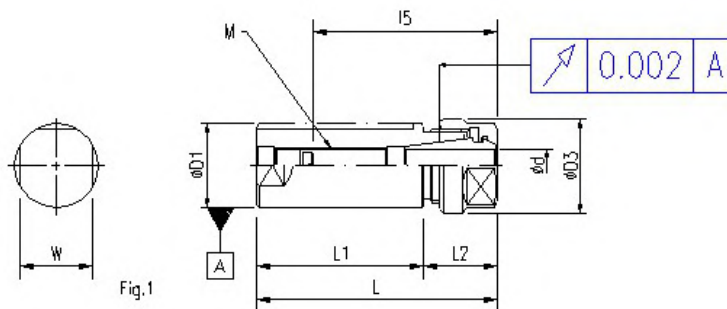
SSL3/4"-ER11M-040	1	0.5~7.0	56	40	16	37	3/4"		16	M8*P1.0	17	ER11M	ER11	W-ER11M
-070			86	70		57								
-105			121	105		67								
-ER16M-040	1	0.5~10.0	63	40	23	47	3/4"		22	M11*P1.0	17	ER16M	ER16	W-ER16M
-055			78	55		62								
-070			93	70		72								
-105			128	105		82								
-ER20M-040	2	0.5~13.0	70	40	30	47	3/4"	24	28	M14*P1.0	22	ER20M	ER20	W-ER20M
-070			100	70		72								
-105			135	105		82								

SSL1"-ER11M-070	1	0.5~7.0	86	70	16	57	1"		22	M8*P1.0	22	ER11M	ER11	W-ER11M
-ER16M-050		0.5~10.0	73	50	23	57	1"		22	M11*P1.0	22	ER16M	ER16	W-ER16M
-070			93	70		72								
-105			128	105		82								
-ER20M-050		0.5~13.0	74	50	24	57	1"		28	M14*P1.0	22	ER20M	ER20	W-ER20M
-070			94	70		72								
-105			129	105		82								
-ER25M-070			2	0.5~16.0		103								

SSL1 1/4"-ER20M-070	1	0.5~13.0	94	70	24	72	1 1/4"		28	M14*P1.0	27	ER20M	ER20	W-ER20M
-095			119	95		82								
-ER25M-080			0.5~16.0	105	80	25	82	1 1/4"		35	M18*P1.5	27	ER25M	ER25

短鼻型側固直柄ER筒夾刀柄

Short nose type straight shank with flat ER collet chucks



規格 Part No.	Fig.	夾持範圍 Ø Range	L	L1	L2	I5	ØD1	ØD2	ØD3	M	W	螺帽 Nut	彈性筒夾 Collets	扳手 Wrench
SSL16-ER11-035	1	0.5~7.0	50	35	15	36	16		19	M8*P1.0	14	ER11SH	ER11	W-ER11
-070			85	70		56								
-ER16-035	2	0.5~10.0	63	35	28	46	16	22	28	M11*P1.0	19	ER16SH	ER16	W-ER16
-070			98	70		71								
-ER20-035T			75	35		40								

SSL20-ER11-040	1	0.5~7.0	55	40	15	41	20		19	M8*P1.0	17	ER11SH	ER11	W-ER11
-070			85	70		56								
-105			120	105		66								
-ER16-040	2	0.5~10.0	68	40	28	46	20	22	28	M11*P1.0	19	ER16SH	ER16	W-ER16
-070			98	70		61								
-105			133	105		71								
-ER20-040			70	40		30								
-070	100	70	62	72										
-105	135	105	72											
-ER25-060	2	0.5~16.0	93	60	33	52	20	32	42	M14*P1.0	27	ER25SH	ER25	W-ER25

SSL25-ER11-050	1	0.5~7.0	65	50	15	51	25		19	M8*P1.0	22	ER11SH	ER11	W-ER11
-070			85	70		56								
-105			120	105		66								
-062T			80	62		18								
-ER16-050	1	0.5~10.0	72	50	22	56	25		28	M11*P1.0	22	ER16SH	ER16	W-ER16
-070			92	70		61								
-105			127	105		71								
-062T			85	62		23								
-ER20-050	1	0.5~13.0	74	50	24	57	25		34	M14*P1.0	22	ER20SH	ER20	W-ER20
-070			94	70		72								
-105			129	105		82								
-ER25-050			2	0.5~16.0		83								
-070	103	70			72									

SSL32-ER20-060	1	0.5~13.0	84	60	24	67	32		34	M14*P1.0	27	ER20SH	ER20	W-ER20
-ER25-060		0.5~16.0	87	60	27	67	32		42	M18*P1.5	27	ER25SH	ER25	W-ER25
-ER32-060		2~20.0	100	60	40	67	32	40	50	M24*P1.5	36	ER32SH	ER32	W-ER32

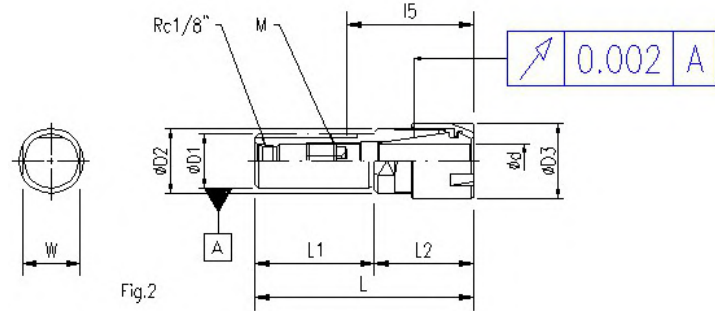
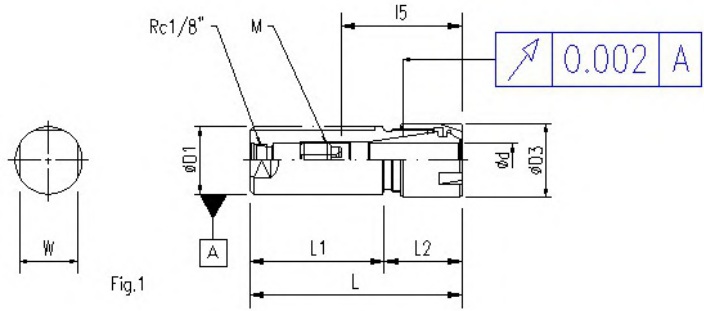
SSL5/8"-ER11-035	1	0.5~7.0	50	35	15	36	5/8"		19	M8*P1.0	14	ER11SH	ER11	W-ER11
-070			85	70		56								
-ER16-035T	2	0.5~10.0	63	35	28	71	5/8"	22	28	M11*P1.0	19	ER16SH	ER16	W-ER16
-070			98	70										
-ER20-035T			0.5~13.0	75	35	40	47	5/8"	25	34	M11*P1.0	22	ER20SH	ER20

SSL3/4"-ER11-040	1	0.5~7.0	55	40	15	41	3/4"		19	M8*P1.0	17	ER11SH	ER11	W-ER11
-070			85	70		61								
-105			120	105		71								
-ER16-040	2	0.5~10.0	62	40	28	46	3/4"	22	28	M11*P1.0	19	ER16SH	ER16	W-ER16
-055			83	55		61								
-070			98	70		61								
-105			133	105		71								
-120			148	120		71								
-040F1	1		65	40	25			28			17			
-ER20-040	2	0.5~13.0	70	40	30	47	3/4"	25	34	M14*P1.0	22	ER20SH	ER20	W-ER20
-070			100	70		62								
-105			135	105		72								

SSL1"-ER11-050	1	0.5~7.0	55	50	15	51	1"		19	M8*P1.0	22	ER11SH	ER11	W-ER11
-070			85	70		56								
-105			120	105		66								
-085T			103	85		18								
-ER16-050	1	0.5~10.0	72	50	22	56	1"		28	M11*P1.0	22	ER16SH	ER16	W-ER16
-070			92	70		61								
-105			127	105		71								
-074			99	74		25								
-ER20-050	1	0.5~13.0	74	50	24	57	1"		34	M14*P1.0	22	ER20SH	ER20	W-ER20
-070			94	70		72								
-105			129	105		82								
-ER25-050	2	0.5~16.0	83	50	33	57	1"	32	42	M18*P1.5	27	ER25SH	ER25	W-ER25
-070			103	70		72								

高壓中心出水短鼻型側固直柄 mini 細型 ERM 筒夾刀柄

High pressure coolant through short nose type straight shank with flat mini slim ERM collet chucks



規格 Part No.	Fig.	夾持範圍 Ø Range	L	L1	L2	I5	ØD1	ØD2	ØD3	M	W	螺帽 Nut	彈性筒夾 Collets	扳手 Wrench
SSLKT16-ER11M-035	1	0.5~7.0	51	35	16	27	16		16	M8*P1.0	14	ER11M	ER11	W-ER11M
-070			86	70		57								
-ER16M-035	2	0.5~10.0	64	35	29	37	16	19	22	M11*P1.0	17	ER16M	ER16	W-ER16M
-070			99	70		72								
-ER20M-035	2	0.5~13.0	75	35	40	37	16	24	28	M11*P1.0	22	ER20M	ER20	W-ER20M
SSLKT20-ER11M-040	1	0.5~7.0	56	40	16	27	20		16	M8*P1.0	17	ER11M	ER11	W-ER11M
-070			86	70		57								
-105			121	105		67								
-ER16M-040	1	0.5~10.0	63	40	23	37	20		22	M11*P1.0	17	ER16M	ER16	W-ER16M
-070			93	70		72								
-105			128	105		82								
-ER20M-040	2	0.5~13.0	70	40	30	37	20	24	28	M14*P1.0	22	ER20M	ER20	W-ER20M
-070			100	70		72								
-105			135	105		82								
SSLKT22-ER16M-080	1	0.5~10.0	103	80	23	72	22		22	M11*P1.0	19	ER16M	ER16	W-ER16M
-105			128	105		82								
-ER20M-080	2	0.5~13.0	110	80	30	72	22	24	28	M14*P1.0	22	ER20M	ER20	W-ER20M
-105			135	105		82								
SSLKT25-ER11M-070	1	0.5~7.0	86	70	16	57	25		22	M8*P1.0	22	ER11M	ER11	W-ER11M
-ER16M-050	1	0.5~10.0	73	50	23	47	25		22	M11*P1.0	22	ER16M	ER16	W-ER16M
-070			93	70		72								
-105			128	105		82								
-ER20M-050	1	0.5~13.0	74	50	24	47	25		28	M14*P1.0	22	ER20M	ER20	W-ER20M
-070			94	70		72								
-105			129	105		82								
-ER25M-070	2	0.5~16.0	103	70	33	72	25	30	35	M18P1.5	27	ER25M	ER25	W-ER25M
SSLKT32-ER20M-070	1	0.5~13.0	94	70	24	72	32		28	M14*P1.0	27	ER20M	ER20	W-ER20M
-095			119	95		82								
-ER25M-080	2	0.5~16.0	105	80	25	82	32		35	M18*P1.5	27	ER25M	ER25	W-ER25M

SSLKT5/8"-ER11M-035	1	0.5~7.0	51	35	16	27	5/8"		16	M8*P1.0	14	ER11M	ER11	W-ER11M
-070			86	70		57								
-ER16M-035	2	0.5~10.0	64	35	29	37	5/8"	19	22	M11*P1.0	17	ER16M	ER16	W-ER16M
-070			99	70		72								
-ER20M-035		0.5~13.0	75	35	40	37	5/8"	24	28	M11*P1.0	22	ER20M	ER20	W-ER20M

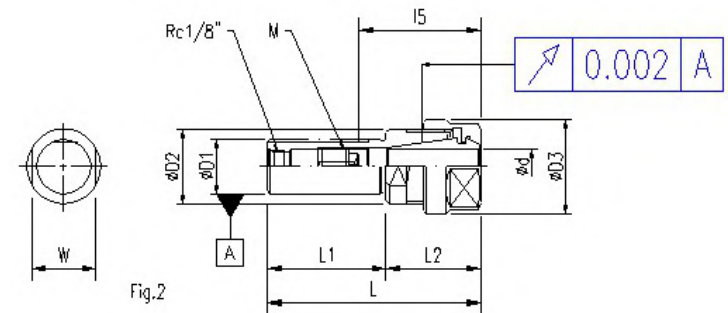
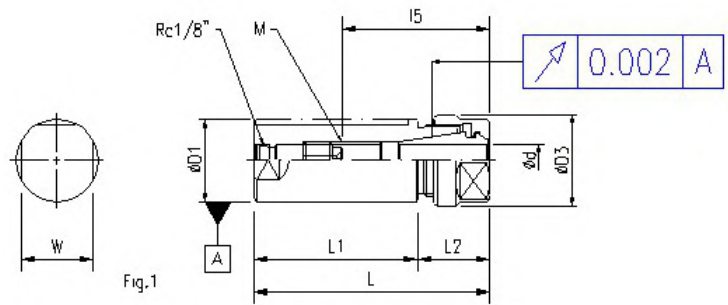
SSLKT3/4"-ER11M-040	1	0.5~7.0	56	40	16	27	3/4"		16	M8*P1.0	17	ER11M	ER11	W-ER11M
-070			86	70		57								
-105			121	105		67								
-ER16M-040	1	0.5~10.0	63	40	23	37	3/4"		22	M11*P1.0	17	ER16M	ER16	W-ER16M
-055			78	55		52								
-070			93	70		72								
-105			128	105		82								
-ER20M-040	2	0.5~13.0	70	40	30	37	3/4"	24	28	M14*P1.0	22	ER20M	ER20	W-ER20M
-070			100	70		72								
-105			135	105		82								

SSLKT1"-ER11M-070	1	0.5~7.0	86	70	16	57	1"		22	M8*P1.0	22	ER11M	ER11	W-ER11M
-ER16M-050	1	0.5~10.0	74	50	23	47	1"		22	M11*P1.0	22	ER16M	ER16	W-ER16M
-070			94	70		72								
-105			129	105		82								
-ER20M-050	1	0.5~13.0	74	50	24	47	1"		28	M14*P1.0	22	ER20M	ER20	W-ER20M
-070			94	70		72								
-105			129	105		82								
-ER25M-070	2	0.5~16.0	103	70	33	72	1"	30	35	M18*P1.5	27	ER25M	ER25	W-ER25M

SSLKT1 1/4"-ER20M	1	0.5~13.0	94	70	24	72	1 1/4"		28	M14*P1.0	27	ER20M	ER20	W-ER20M
-070			119	95		82								
-095		0.5~16.0	105	80	25	82	1 1/4"		35	M18*P1.5	27	ER25M	ER25	W-ER25M

高壓中心出水短鼻型側固直柄ER 筒夾刀柄

High pressure coolant through short nose type straight shank with flat ER collet chucks



規格 Part No.	Fig.	夾持範圍 Ø Range	L	L1	L2	l5	ØD1	ØD2	ØD3	M	W	螺帽 Nut	彈性筒夾 Collets	扳手 Wrench
SSLKT16-ER11-035	1	0.5~7.0	50	35	15	26	16		19	M8*P1.0	14	ER11SH	ER11	W-ER11
-070			85	70		56								
-ER16-035	2	0.5~10.0	63	35	28	36	16	22	28	M11*P1.0	19	ER16SH	ER16	W-ER16
-070			98	70		71								

SSLKT20-ER11-040	1	0.5~7.0	55	40	15	31	20		19	M8*P1.0	17	ER11SH	ER11	W-ER11
-070			85	70		56								
-105			120	105		66								
-ER16-040	2	0.5~10.0	68	40	28	36	20	22	28	M11*P1.0	19	ER16SH	ER16	W-ER16
-070			98	70		61								
-105			133	105		71								
-ER20-040	2	0.5~13.0	70	40	30	37	20	25	34	M14*P1.0	22	ER20SH	ER20	W-ER20
-070			100	70		62								
-105			135	105		72								

SSLKT25-ER11-050	1	0.5~7.0	65	50	15	41	25		19	M8*P1.0	22	ER11SH	ER11	W-ER11
-070			85	70		56								
-105			120	105		66								
-ER16-050	1	0.5~10.0	72	50	22	46	25		28	M11*P1.0	22	ER16SH	ER16	W-ER16
-070			92	70		61								
-105			127	105		71								
-ER20-050	1	0.5~13.0	74	50	24	47	25		34	M14*P1.0	22	ER20SH	ER20	W-ER20
-070			94	70		72								
-105			129	105		82								
-ER25-050	2	0.5~16.0	83	50	33	47	25	32	42	M18*P1.5	27	ER25SH	ER25	W-ER25
-070			103	70		72								

SSLKT32-ER20-060	1	0.5~13.0	84	60	24	57	32		34	M14*P1.0	27	ER20SH	ER20	W-ER20
-ER25-060		0.5~16.0	87	60	27	57	32		42	M18*P1.5	27	ER25SH	ER25	W-ER25
-ER32-060		2.0~20.0	100	60	40	57	32	40	50	M24*P1.5	36	ER32SH	ER32	W-ER32

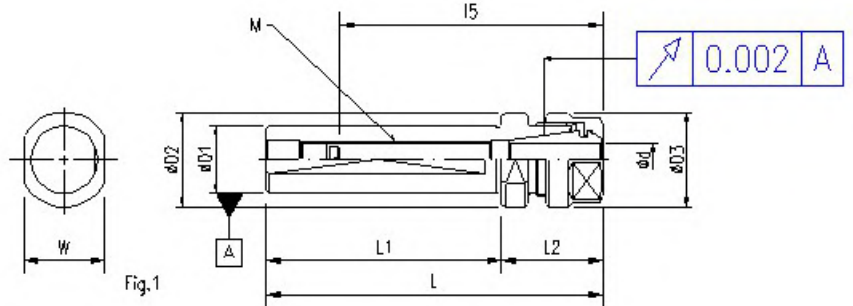
SSLKT5/8"-ER11-035	1	0.5~7.0	50	35	15	26	5/8"		19	M8*P1.0	14	ER11SH	ER11	W-ER11
-070			85	70		56								
-ER16-035	2	0.5~10.0	63	35	28	36	5/8"	22	28	M11*P1.0	19	ER16SH	ER16	W-ER16
-070			98	70		71								

SSLKT3/4"-ER11-040	1	0.5~7.0	55	40	15	41	3/4"		19	M8*P1.0	17	ER11SH	ER11	W-ER11
-070			85	70		61								
-105			120	105		71								
-ER16-040	2	0.5~10.0	68	40	28	46	3/4"	22	28	M11*P1.0	19	ER16SH	ER16	W-ER16
-055			83	55		61								
-070			98	70		61								
-105			133	105		71								
-ER20-040	2	0.5~13.0	70	40	30	47	3/4"	25	34	M14*P1.0	22	ER20SH	ER20	W-ER20
-070			100	70		62								
-105			135	105		72								

SSLKT1"-ER11-050	1	0.5~7.0	65	50	15	41	1"		19	M8*P1.0	22	ER11SH	ER11	W-ER11
-070			85	70		56								
-105			120	105		66								
-ER16-050	1	0.5~10.0	72	50	22	46	1"		28	M11*P1.0	22	ER16SH	ER16	W-ER16
-070			92	70		61								
-105			127	105		71								
-ER20-050	1	0.5~13.0	74	50	24	47	1"		34	M14*P1.0	22	ER20SH	ER20	W-ER20
-070			94	70		72								
-105			129	105		82								
-ER25-050	2	0.5~16.0	83	50	33	47	1"	32	42	M18*P1.5	27	ER25SH	ER25	W-ER25
-070			103	70		72								

側固直柄ER筒夾刀柄

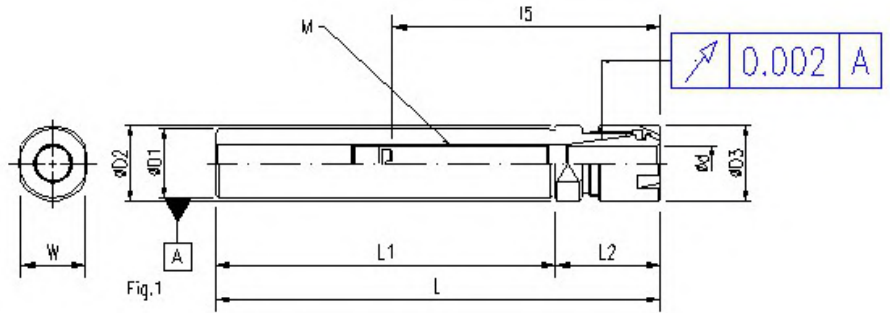
Straight shank with flat ER collet chucks



規格 Part No.	Fig.	夾持範圍 Ø Range	L	L1	L2	l5	ØD1	ØD2	ØD3	M	W	螺帽 Nut	彈性筒夾 Collets	扳手 Wrench
SL20-ER16-070	1	0.5~10.0	100	70	30	80	20	28	28	M11*P1.0	24	ER16SH	ER16	W-ER16
-ER20-070		0.5~13.0	102	70	32	80	20	32	34	M14*P1.0	27	ER20SH	ER20	W-ER20
SL22-ER11-105	1	0.5~7.0	127	105	22	80	22	27	19	M8*P1.0	24	ER11SH	ER11	W-ER11
-ER16-105		0.5~10.0	135	105	30	90	22	28	28	M11*P1.0	24	ER16SH	ER16	W-ER16
SL25-ER16-070	1	0.5~10.0	100	70	30	80	25	32	28	M11*P1.0	25	ER16SH	ER16	W-ER16
-105			135	105		90								
-ER20-070		0.5~13.0	102	70	32	80	25	32	34	M14*P1.0	27	ER20SH	ER20	W-ER20
-ER25-070		0.5~16.0	106	70	36	80	25	40	42	M18*P1.5	36	ER25SH	ER25	W-ER25
SL32-ER20-080	1	0.5~13.0	112	80	32	90	32	36	34	M14*P1.0	32	ER20SH	ER20	W-ER20
-ER25-080		0.5~16.0	116	80	36	90	32	40	42	M18*P1.5	36	ER25SH	ER25	W-ER25
-ER32-080		2~20.0	121	80	41	90	32	50	50	M24*P1.5	46	ER32SH	ER32	W-ER32
SL40-ER32-110	1	2.0~20.0	151	110	41	100	40	50	50	M24*P1.5	46	ER32SH	ER32	W-ER32
-ER40-110		3.0~26.0	158	110	48	100	40	58	63	M28*P1.5	50	ER40SH	ER40	W-ER40
SL3/4"-ER16-070	1	0.5~10.0	100	70	30	80	3/4"	28	28	M11*P1.0	24	ER16SH	ER16	W-ER16
-ER20-070		0.5~13.0	102	70	32	80	3/4"	32	34	M14*P1.0	27	ER20SH	ER20	W-ER20
SL1"-ER16-070	1	0.5~10.0	100	70	30	80	1"	32	28	M11*P1.0	25	ER16SH	ER16	W-ER16
-105			135	105		100								
-ER20-070		0.5~13.0	102	70	32	80	1"	32	34	M14*P1.0	27	ER20SH	ER20	W-ER20
-ER25-070		0.5~16.0	106	70	36	80	1"	40	42	M18*P1.5	36	ER25SH	ER25	W-ER25

直柄 mini 細型 ERM 筒夾刀柄

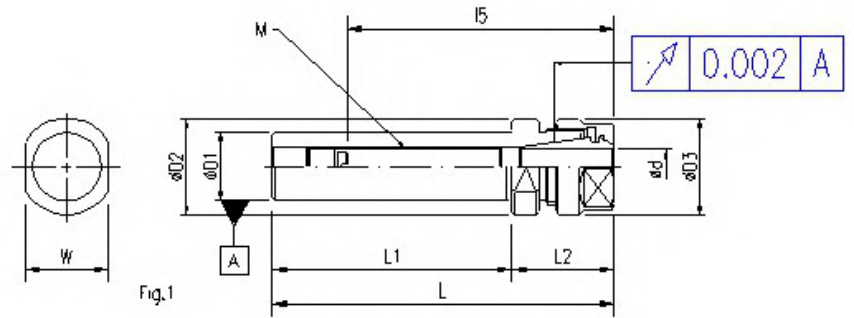
Straight shank mini slim ERM collet chucks



規格 Part No.	Fig.	夾持範圍 Ø Range	L	L1	L2	l5	ØD1	ØD2	ØD3	M	W	螺帽 Nut	彈性筒夾 Collets	扳手 Wrench
S16-ER11M-100	1	0.5~7.0	122	100	22	70	16	16	16	M8*P1.0	14	ER11M	ER11	W-ER11M
-151			170	151	19	M8*P1.0								
-200			222	200	22	70		M8*P1.0						
S20-ER16M-100	1	0.5~10.0	131	100	31	80	20	22	22	M11*P1.0	19	ER16M	ER16	W-ER16M
-137			163	137	26	M11*P1.0		17						
-200			231	200	31	80		M11*P1.0		19				
-ER20M-100	1	0.5~13.0	132	100	32	80	20	28	28	M14*P1.0	25	ER20M	ER20	W-ER20M
-150			132	150										
-200			232	200										
S25-ER16M-100	1	0.5~10.0	131	100	31	80	25	22	22	M11*P1.0	19	ER16M	ER16	W-ER16M
-150			181	150		80								
-200			231	200		80								
-ER20M-100	1	0.5~13.0	132	100	32	80	25	28	28	M14*P1.0	25	ER20M	ER20	W-ER20M
-137.5			166	138		28		22						
-200			232	200		32		80			M14*P1.0			
-ER25M-100	1	0.5~16.0	136	100	36	85	25	35	35	M18P1.5	32	ER25M	ER25	W-ER25M
-150			186	150		58								
-200			236	200		58								
S5/8"-ER11M-100	1	0.5~7.0	122	100	22	70	5/8"	16	16	M8*P1.0	14	ER11M	ER11	W-ER11M
-150			172	150										
-200			222	200										
S3/4"-ER16M-100	1	0.5~10.0	131	100	31	80	3/4"	22	22	M11*P1.0	19	ER16M	ER16	W-ER16M
-150			181	150										
-200			231	200										
-ER20M-100	1	0.5~13.0	132	100	32	80	3/4"	28	28	M14*P1.0	25	ER20M	ER20	W-ER20M
-150			182	150										
-200			232	200										
S1"-ER16M-100	1	0.5~10.0	131	100	31	80	1"	22	22	M11*P1.0	19	ER16M	ER16	W-ER16M
-150			181	150										
-200			231	200										
-ER20M-100	1	0.5~13.0	132	100	32	80	1"	28	28	M14*P1.0	25	ER20M	ER20	W-ER20M
-150			182	150										
-200			232	200										
-ER25M-100	1	0.5~16.0	136	100	36	85	1"	35	35	M18*P1.5	32	ER25M	ER25	W-ER25M
-150			186	150		58								
-200			236	200		58								

直柄ER筒夾刀柄

Straight shank ER collet chucks



規格 Part No.	Fig.	夾持範圍 Ø Range	L	L1	L2	l5	ØD1	ØD2	ØD3	M	W	螺帽 Nut	彈性筒夾 Collets	扳手 Wrench
S20-ER16-070	1	0.5~10.0	100	70	30	80	20	28	28	M11*P1.0	24	ER16SH	ER16	W-ER16
-ER20-070		0.5~13.0	102	70	32	80	20	32	34	M14*P1.0	27	ER20SH	ER20	W-ER20
S25-ER16-070	1	0.5~10.0	100	70	30	80	25	32	28	M11*P1.0	25	ER16SH	ER16	W-ER16
-150			180	150										
-ER20-070		0.5~13.0	102	70	32	80	25	32	34	M14*P1.0	27	ER20SH	ER20	W-ER20
-ER25-070	0.5~16.0	106	70	36	80	25	40	42	M18*P1.5	36	ER25SH	ER25	W-ER25	
S32-ER20-080	1	0.5~13.0	112	80	32	90	32	36	34	M14*P1.0	32	ER20SH	ER20	W-ER20
-ER25-080		0.5~16.0	116	80	36	90	32	40	42	M18*P1.5	36	ER25SH	ER25	W-ER25
-ER32-080		2~20.0	121	80	41	90	32	50	50	M24*P1.5	46	ER32SH	ER32	W-ER32
S3/4"-ER16-070	1	0.5~10.0	100	70	30	80	3/4"	28	28	M11*P1.0	24	ER16SH	ER16	W-ER16
-ER20-070		0.5~13.0	102	70	32	80	3/4"	32	34	M14*P1.0	27	ER20SH	ER20	W-ER20
S1"-ER16-070	1	0.5~10.0	100	70	30	80	1"	32	28	M11*P1.0	25	ER16SH	ER16	W-ER16
-ER20-070		0.5~13.0	102	70	32	80	1"	32	34	M14*P1.0	27	ER20SH	ER20	W-ER20
-ER25-070		0.5~16.0	106	70	36	80	1"	40	42	M18*P1.5	36	ER25SH	ER25	W-ER25

副主軸用短鼻型直柄ERM筒夾刀柄

Sub-spindle short nose type straight shank ERM collet chucks

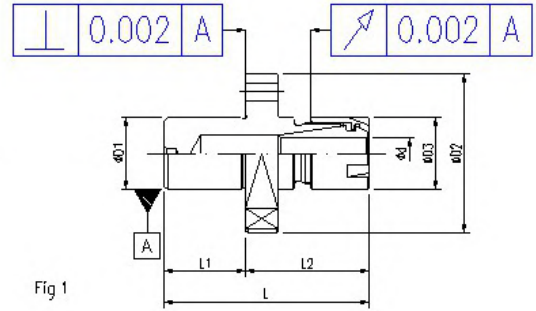
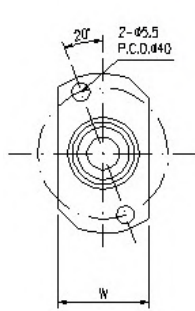


Fig 1

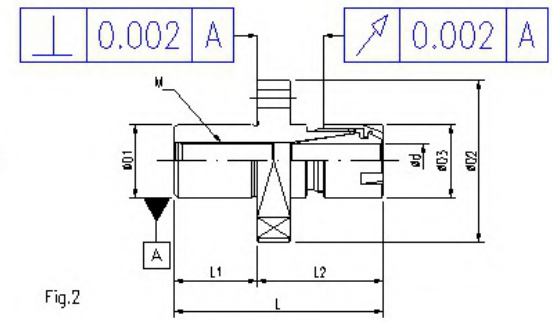
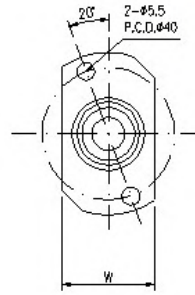


Fig.2

規格 Part No.	Fig.	夾持範圍 Ø Range	L	L1	L2	l5	ØD1	ØD2	ØD3	M	W	螺帽 Nut	彈性筒夾 Collets	扳手 Wrench
STAR-S22-F10-ER16M-025	1	0.5~10.0	63	25	38	-	22	49	22	-	28	ER16M	ER16	W-ER16M
STAR-S22-F10-ER16M-025H	2	0.5~10.0	63	25	38	-	22	49	22	M11*P1.0	28	ER16M	ER16	W-ER16M